

# 2014 Survivor



**Oil Pattern Distance:** 42 Feet      **Reverse Brush Drop:** 38 Feet      **Oil Per Board:** 50 uL  
**Forward Oil Total:** 15.45 mL      **Reverse Oil Total:** 8.3 mL      **Volume Oil Total:** 23.75 mL  
**Forward Boards Crossed:** 309 Boards      **Reverse Boards Crossed:** 166 Boards      **Total Boards Crossed:** 475 Boards

	Start	Stop	Loads	Speed	Crossed	Start	End	Feet	T.Oil
1	2L	2R	3	14	111	0.0	3.9	3.9	5550
2	9L	9R	2	14	46	3.9	7.8	3.9	2300
3	10L	9R	2	18	44	7.8	12.9	5.1	2200
4	11L	10R	2	18	40	12.9	18.0	5.1	2000
5	12L	11R	2	22	36	18.0	24.2	6.2	1800
6	13L	12R	2	22	32	24.2	30.4	6.2	1600
7	2L	2R	0	22	0	30.4	36.0	5.6	0
8	2L	2R	0	26	0	36.0	42.0	6.0	0

Navigation: Forward Reverse More

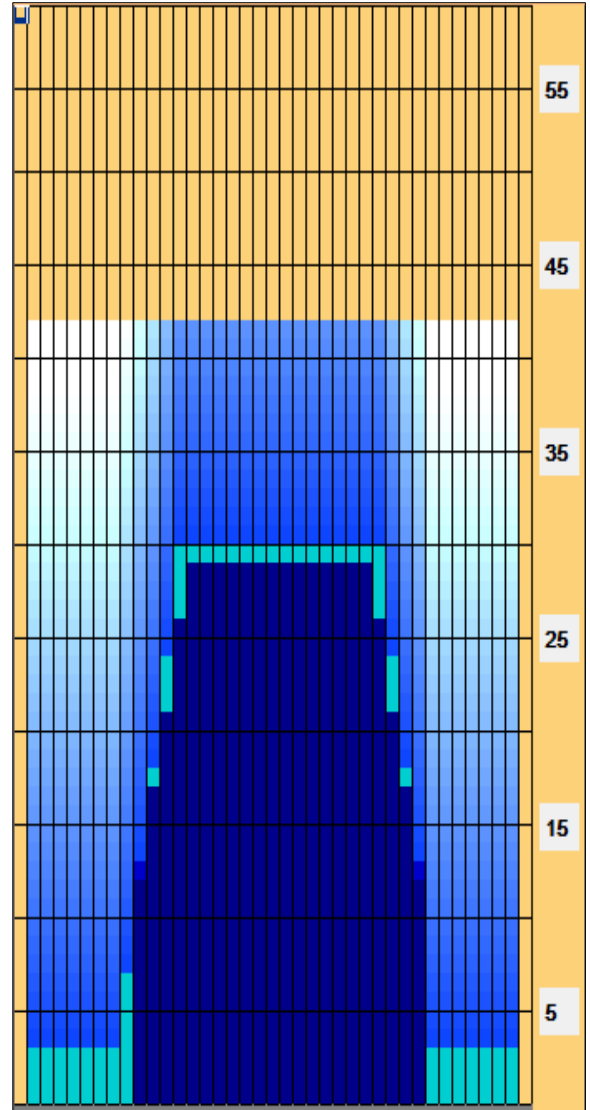
	Start	Stop	Loads	Speed	Crossed	Start	End	Feet	T.Oil
1	2L	2R	0	30	0	42.0	29.0	-13.0	0
2	14L	13R	1	22	14	29.0	25.9	-3.1	700
3	13L	12R	2	18	32	25.9	20.8	-5.1	1600
4	12L	11R	2	14	36	20.8	16.9	-3.9	1800
5	11L	10R	2	14	40	16.9	13.0	-3.9	2000
6	10L	9R	2	10	44	13.0	10.2	-2.8	2200
7	2L	2R	0	10	0	10.2	0.0	-10.2	0

Navigation: Forward Reverse More

Conditioner:  
Infinity

TransferType:  
Transfer Brush

- Forward
- Reverse
- Combined
- Buff



Item	3L-7L:18L-18R	8L-12L:18L-18R	13L-17L:18L-18R	18L-18R:17R-13R	18L-18R:12R-8R	18L-18R:7R-3R
Description	Outside Track:Middle	Middle Track:Middle	Inside Track:Middle	Middle: Inside Track	Middle:Middle Track	Middle:Outside Track
Track Zone Ratio	7.33	2.34	1.01	1	1.75	7.33

