



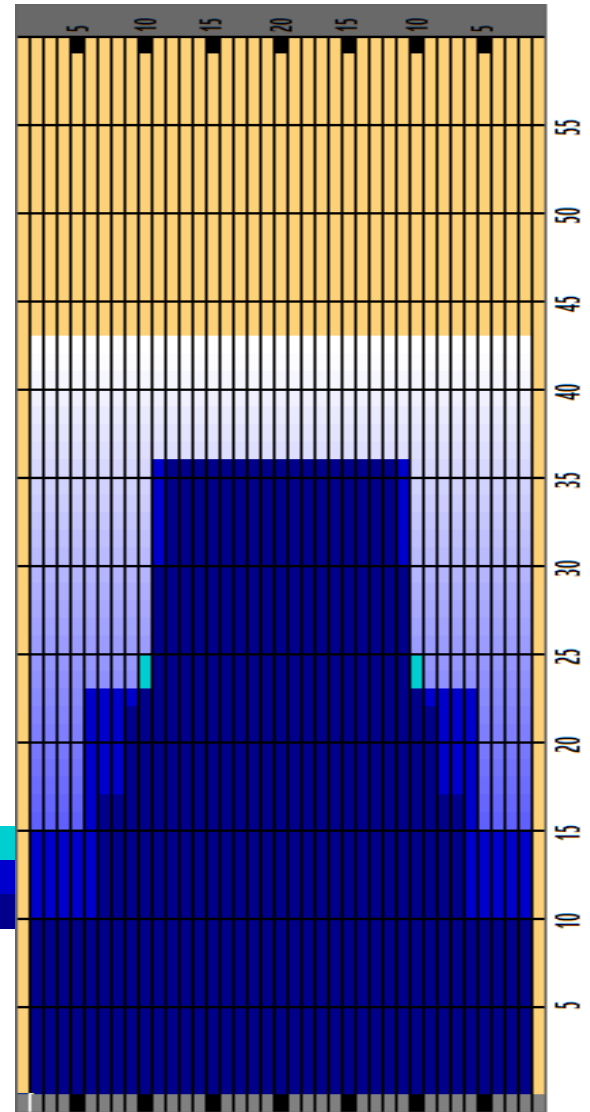
# 16 - 2016 JR GOLD - MATCH PLAY & TV



Oil Pattern Distance	43	Reverse Brush Drop	39	Oil Per Board	Multi ul
Forward Oil Total	15.395 mL	Reverse Oil Total	9.165 mL	Volume Oil Total	24.56 mL
Tank Configuration	N/A	Tank A Conditioner	FIRE	Tank B Conditioner	FIRE

	START	STOP	LOADS	MICS	SPEED	BUFFER	TANK	CROSSED	START	END	FEET	T.OIL
1	2L	2R	5	35	18	3	A	185	0.0	10.2	10.2	6475
2	7L	7R	3	35	18	3	A	81	10.2	17.8	7.6	2835
3	9L	9R	2	45	18	3	A	46	17.8	22.9	5.1	2070
4	10L	10R	1	45	18	3	A	21	22.9	25.4	2.5	945
5	11L	11R	2	45	18	3	A	38	25.4	30.5	5.1	1710
6	12L	12R	2	40	22	3	A	34	30.5	36.7	6.2	1360
7	2L	2R	0	40	22	3	A	0	36.7	39.0	2.3	0
8	2L	2R	0	40	10	3	A	0	39.0	43.0	4.0	0

	START	STOP	LOADS	MICS	SPEED	BUFFER	TANK	CROSSED	START	END	FEET	T.OIL
1	2L	2R	0	50	30	3	B	0	43.0	36.0	-7.0	0
2	11L	11R	3	45	30	3	B	57	36.0	23.3	-12.7	2565
3	6L	6R	2	50	30	3	B	58	23.3	14.8	-8.5	2900
4	2L	2R	2	50	30	3	B	74	14.8	6.3	-8.5	3700
5	2L	2R	0	50	10	3	B	0	6.3	0.0	-6.3	0



Cleaner Ratio Main Mix                    5:1            Forward  
 Cleaner Ratio Back End Mix            5:1            Reverse  
 Cleaner Ratio Back End Distance        59            Combined  
 Buffer RPM: 4 = 720 | 3 = 500 | 2 = 200 | 1 = 50  
 Lanes will be double stripped each morning and lanes will be conditioned one (1) time per day in the morning.

Item	3L-7L:18L-18R	8L-12L:18L-18R	13L-17L:18L-18R	18L-18R:17R-13R	18L-18R:12R-8R	18L-18R:7R-3R
Description	Outside Track:Middle	Middle Track:Middle	Inside Track:Middle	Middle: Inside Track	Middle:Middle Track	Middle:Outside Track
Track Zone Ratio	2.74	1.34	1	1	1.34	2.74

