

# 2013 Youth Open



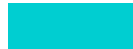
Oil Pattern Distance:	42 Feet	Reverse Brush Drop:	38 Feet	Oil Per Board:	50 uL
Forward Oil Total:	12.4 mL	Reverse Oil Total:	9.2 mL	Volume Oil Total:	21.6 mL
Forward Boards Crossed:	248 Boards	Reverse Boards Crossed:	184 Boards	Total Boards Crossed:	432 Boards

	Start	Stop	Loads	Speed	Crossed	Start	End	Feet	T.Oil
1	2L	2R	3	14	111	0.0	3.9	3.9	5550
2	9L	9R	1	14	23	3.9	5.8	1.9	1150
3	10L	10R	2	18	42	5.8	10.9	5.1	2100
4	11L	11R	2	18	38	10.9	16.0	5.1	1900
5	12L	12R	2	18	34	16.0	21.1	5.1	1700
6	2L	2R	0	22	0	21.1	32.0	10.9	0
7	2L	2R	0	26	0	32.0	42.0	10.0	0

Conditioner:  
Type In or Select  
One

TransferType:  
Type In or Select  
One

Forward



Reverse



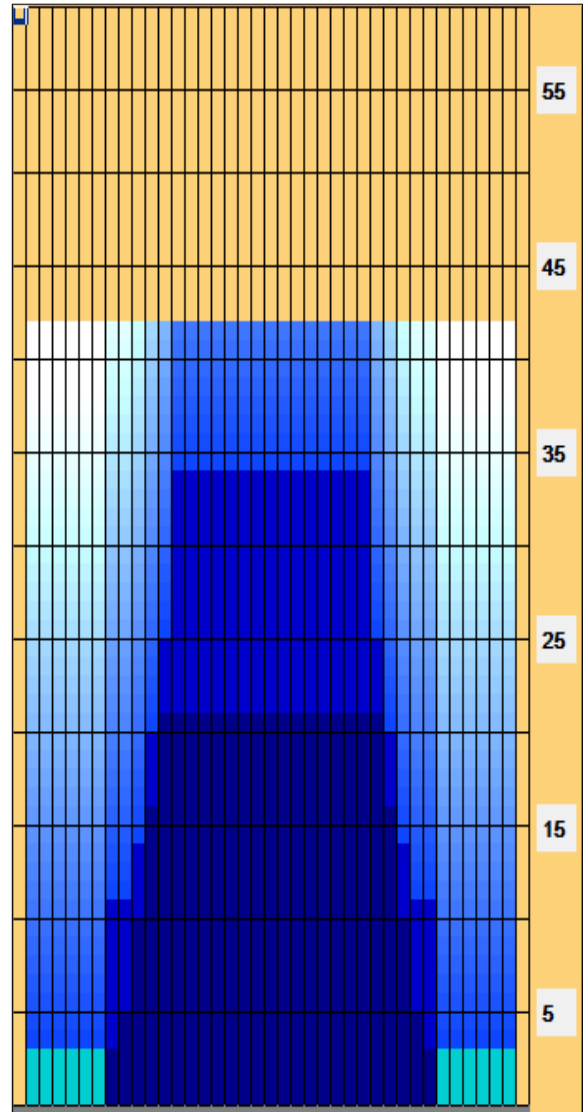
Combined



Buff



	Start	Stop	Loads	Speed	Crossed	Start	End	Feet	T.Oil
1	2L	2R	0	30	0	42.0	34.0	-8.0	0
2	13L	13R	3	22	45	34.0	24.7	-9.3	2250
3	12L	12R	2	18	34	24.7	19.6	-5.1	1700
4	11L	11R	2	18	38	19.6	14.5	-5.1	1900
5	10L	10R	2	14	42	14.5	10.6	-3.9	2100
6	8L	8R	1	18	25	10.6	8.1	-2.5	1250
7	2L	2R	0	14	0	8.1	0.0	-8.1	0



Item	3L-7L:18L-18R	8L-12L:18L-18R	13L-17L:18L-18R	18L-18R:17R-13R	18L-18R:12R-8R	18L-18R:7R-3R
Description	Outside Track:Middle	Middle Track:Middle	Inside Track:Middle	Middle:Inside Track	Middle:Middle Track	Middle:Outside Track
Track Zone Ratio	6.67	2.08	1	1	2.08	6.67

